

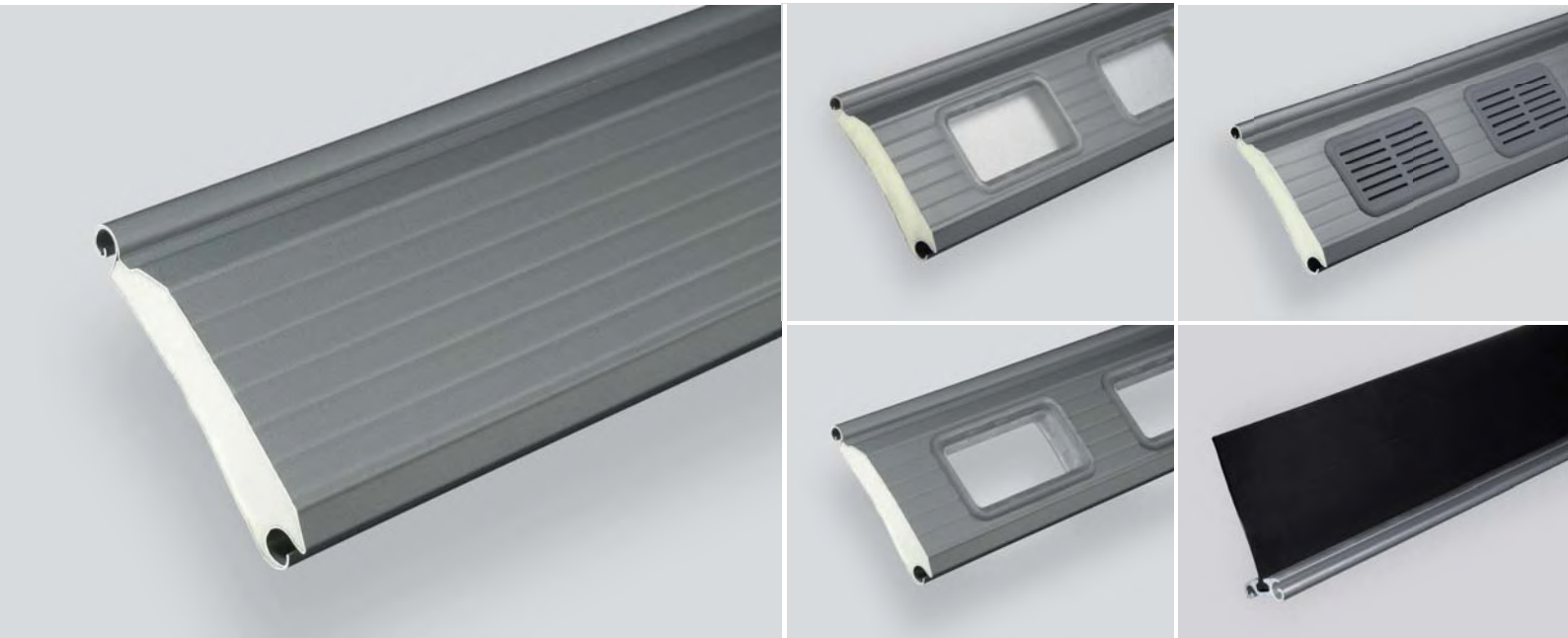


Roller door profile 1.95 R

for light and
heat-insulating roller shutters.

FOX | INDUSTRIAL
DOORS

Roller door profile 1.95 R



1.95 R is an insulated roller shutter profile with the outstanding feature of reduced weight. The standard lath in 0.38 mm galvanized steel with transparent coating is comparable in weight to a 1.100 D aluminium lath.

Thanks to the slightly curved form, this profile moves very quietly.

Available with coloured coating in all RAL-colours or coil coating in colours like RAL 3000, 5010, 6009, 7005, 7016, 7044, 8014, 9002, 9006, 9007 and 9016.

The recommended choice for roller shutter doors especially when low self-weight and small bale diameter are required.

• technical details

insulated PU-filled profile
 material: 0.38 mm galvanized steel
 slats on 1 m height: 10.2
 thickness of slats: ca. 23 mm

• weight

steel: ~ 0.93 kg/m (9.8 kg/m²)
 window profiles: ~ 10.6 kg/m²

• maximum door size at wind class 2 (without storm hooks)

steel: W 6500 mm x H 6000 mm

• calculated bale diameter

| opening height | tube diameter | | | |
|----------------|---------------|--------|--------|--------|
| | 133 mm | 159 mm | 194 mm | 219 mm |
| 2 m | 300 mm | 310 mm | 340 mm | 360 mm |
| 2.5 m | 340 mm | 360 mm | 350 mm | 360 mm |
| 3 m | 360 mm | 370 mm | 380 mm | 400 mm |
| 3.5 m | 380 mm | 390 mm | 380 mm | 400 mm |
| 4 m | 400 mm | 390 mm | 420 mm | 430 mm |
| 4.5 m | 420 mm | 420 mm | 420 mm | 430 mm |
| 5 m | 420 mm | 420 mm | 450 mm | 440 mm |
| 5.5 m | 460 mm | 420 mm | 460 mm | 480 mm |
| 6 m | 460 mm | 470 mm | 470 mm | 480 mm |
| 6.5 m | 490 mm | 470 mm | 500 mm | 520 mm |

(If a sealing strip is applied the bale diameter increases for at least 20-30 mm)