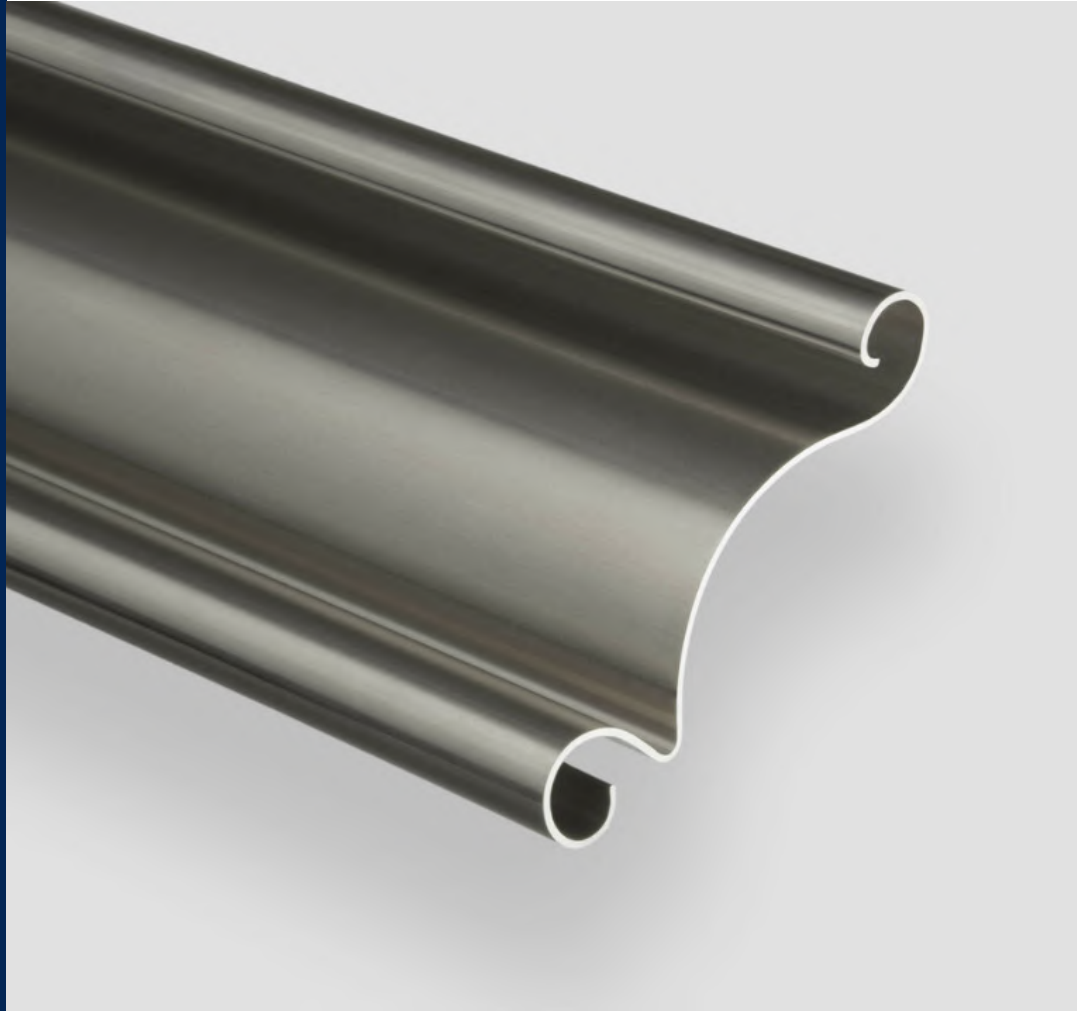


Traditional 75mm Concave Lath | 18swg (1.2mm) | 20swg (0.9mm) | 22swg (0.7mm)



FOX
INDUSTRIAL DOORS

75mm



Material: DX51 Z2 275g Galvanised Steel with Optional Plastisol Powder Coating

We have the 77mm Lath available in various styles and finishes.

You can choose from Galvanised (without finish) and Plastisol (with a Leather-grain Emboss Surface finish).

The styles available include:

- Standard
- Perforated (featuring small punched holes)
- Punched Brick Bond (rectangle holes arranged in a brick pattern) See Page 7
- Punched In Line (rectangle holes aligned in a linear pattern) See Page 7

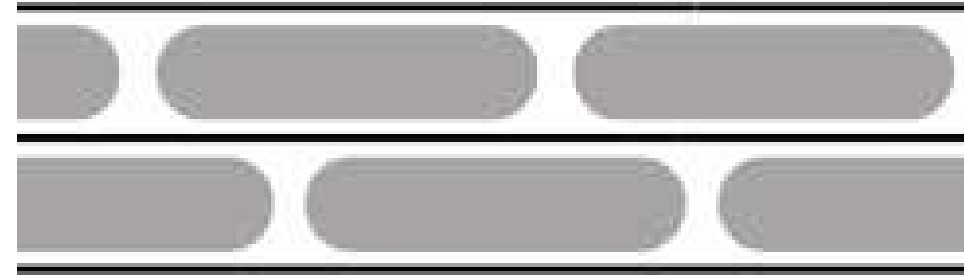
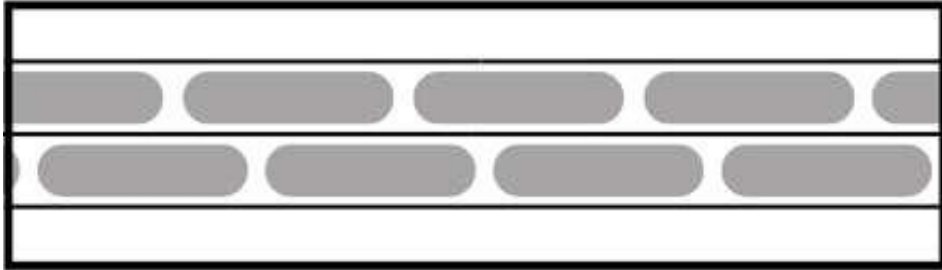


Galvanised Perforated Lath



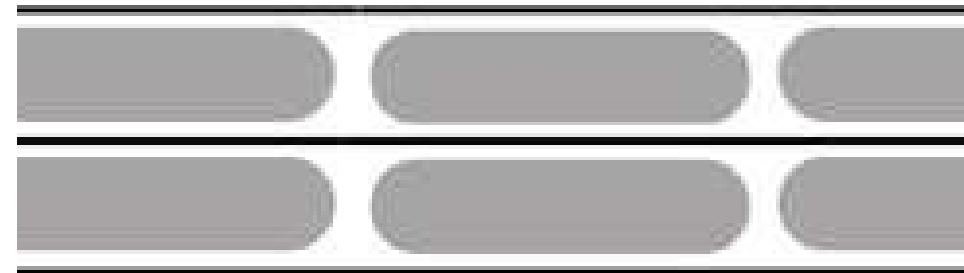
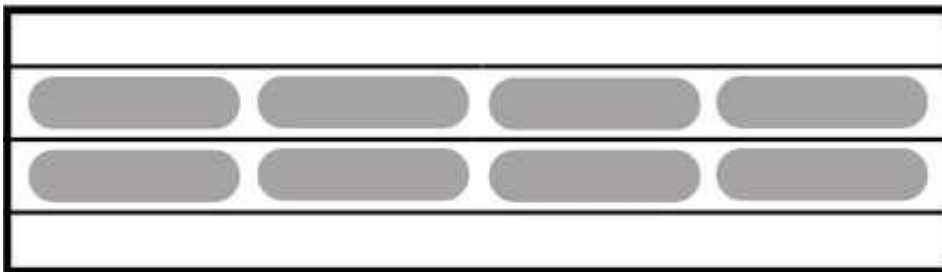
Standard Plastisol Lath





Brick Bond

The brick bond style describes the arrangement of rectangular punched holes in a staggered pattern, offering both security and visibility for your shutter door.



In-Line

The In-Line style features rectangular punched holes arranged symmetrically in a straight line, one directly above the other, without any staggering.

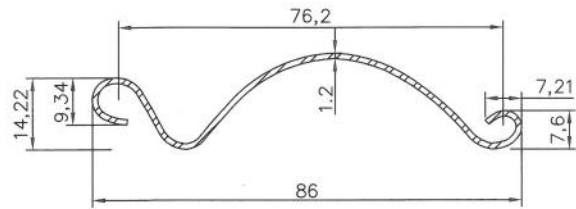


Showcase: five vibrant commercial **75mm perforated shutter doors** for a sheltered outdoor area at an educational facility, enhancing the play experience for children. These colourful shutters were designed to provide a safe and enjoyable space, allowing the little ones to enjoy outdoor time even during inclement weather. The **top sections of the shutters are perforated**, ensuring that natural light and fresh air flow into the play area, creating a bright and inviting environment. With these innovative doors, the nursery can offer a perfect blend of protection and openness, fostering creativity and exploration while keeping the children safe and comfortable.

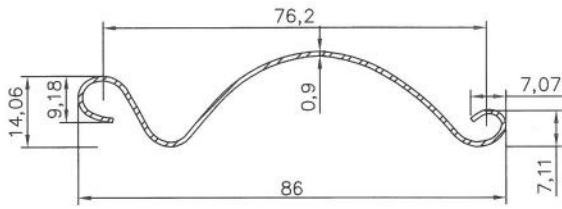


1. Material:
 - Made from high-grade steel, aluminium, or PVC.
2. Thickness:
 - Panel thickness of 75mm.
3. Insulation:
 - CFC-free polyurethane foam insulation for thermal efficiency.
 - Optional double-skinned panels for increased insulation.
4. Dimensions:
 - Customizable width and height, generally ranging from 1m to 5m in width and up to 5m in height.
5. Weight:
 - Varies based on material and dimensions; generally between 50 kg to 200 kg.
6. Finish Options:
 - Powder-coated, anodized, or painted finishes available in multiple colours.
7. Operation:
 - Manual (hand-crank) or electric motor operation.
 - Optional remote control or automated systems.
8. Safety Features:
 - Safety brake system to prevent free fall.
 - Photocell safety sensors to detect obstructions.
9. Guide Rails:
 - Heavy-duty tracks and guide rails for smooth operation.
 - Standard sizes include 40mm or 50mm width.
10. Locking Mechanism:
 - Secure locking systems, including padlockable options.
11. Maintenance:
 - Low maintenance requirements with self-lubricating hinges and rollers.
12. Wind Resistance:
 - Designed to withstand specific wind load ratings (e.g., Class 1 to Class 4).
13. Certification:
 - Compliance with relevant safety and building regulations.

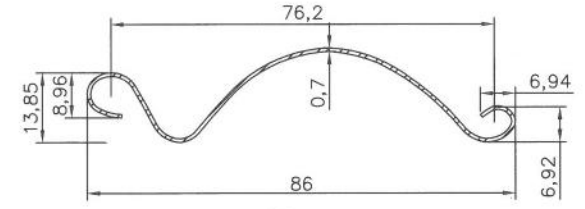
Traditional 75mm Concave Lath | 18swg (1.2mm) | 20swg (0.9mm) | 22swg (0.7mm)



18swg



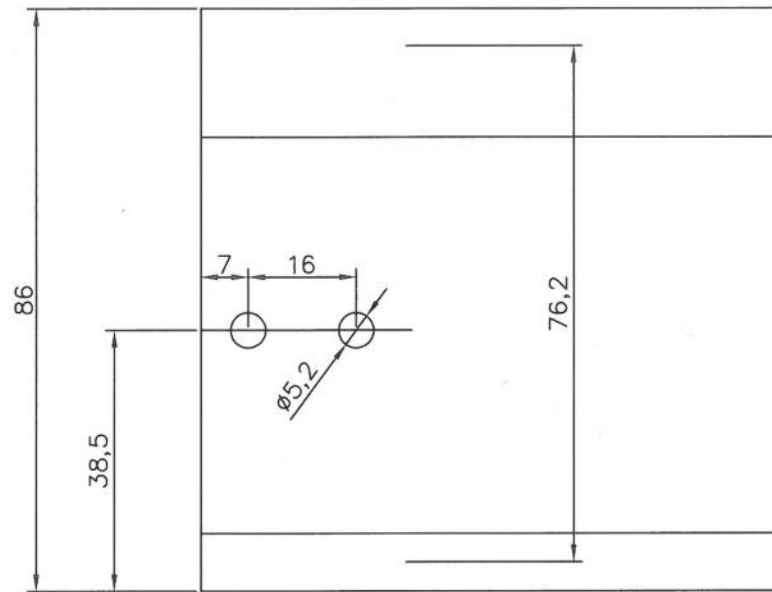
20swg



22swg



Traditional 75mm Concave Lath			
Section	Strip Width (mm)	Weight (kg/m)	Gauge (mm)
75mm 22swg Galv	124.4600	0.6800	0.7000
75mm 20swg Galv	124.4600	0.8800	0.9000
75mm 18swg Galv	124.4600	0.9800	1.1000
75mm 20swg Perforated Galv	124.4600	0.6500	0.9000
75mm 20swg Brickbond Galv	124.4600	0.7100	0.9000
75mm 18swg Brickbond Galv	124.4600	0.8100	1.1000
75mm 22swg Plastisol	124.4600	0.7000	0.7000
75mm 20swg Plastisol	124.4600	0.9000	0.9000
75mm 22swg Plastisol Perforated	124.4600	0.6700	0.7000
75mm 22swg Plastisol Brickbond	124.4600	0.7300	0.7000



Endlock rivet hole locations

Fox Industrial Doors Ltd
 Head Office Address:
 Chapel House
 Queen Street
 Stourton
 Leeds
 LS10 1SL
 United Kingdom
 Landline: 0113 320 1000
 Mobile: 0796 801 4668

Material: DX51 Z2 275g Galvanised Steel with Optional Plastisol Powder Coating